

LED Wall Sconce

61122
INSTALLATION SHEET

START FROM HERE

- Make sure power is completely off at the fuse box.
- Have your fixture installed by a qualified licensed electrician
- Prepare everything in a clear area.
- Wear gloves at all times during this installation.
- Read instructions carefully before you start assembly.
- Keep this instruction sheet for future reference.

Technical Support: 1-877-452-6858

Please Note:

- All Kuzco LED fixtures come with pre-wired LED module(s).
- Unless instructed to do so, please do not touch any part of the LED module(s) as any unnecessary contact with the module could cause permanent damage.
- For dimming, an ELV (Electronic Low Voltage) type of dimmer is required.

- 1.** Remove the fixture from its original packaging. Remove the mounting plate (1c) from within the canopy (2b) by removing the two nuts (2d). Attach the mounting plate (1c) to the electrical junction box (1a), using the two screws (1e) provided in the hardware package.
- 2.** You are now ready to mount the canopy (2b) to the mounting plate (1c). Attach all wiring with the provided wire nuts (1b) (white to white "N", black to black "L", ground to ground "G"). Align the threaded stud (1d) from the mounting plate to the hole inside the canopy (2b). Push the canopy towards the threaded stud (1d) so it extends through the holes in the canopy (2b). You can now screw on the decorative nut (2d) onto the threaded stud (1d). This will securely connect the canopy (2b) to the mounting plate (1c).
- 3.** With the canopy secure, place the 2 bulbs (2c) onto the sockets and thread clockwise. Make sure to slightly bend the sockets outward as shown in the illustration (see Illustration 1). Now carefully place the diffuser (3a) onto the canopy (2b) as shown in the illustration (see Illustration 1-3). Secure the diffuser (3a) using the four screws (2a) provided in the package.
- 4.** You have now completed the installation of your fixture, enjoy.

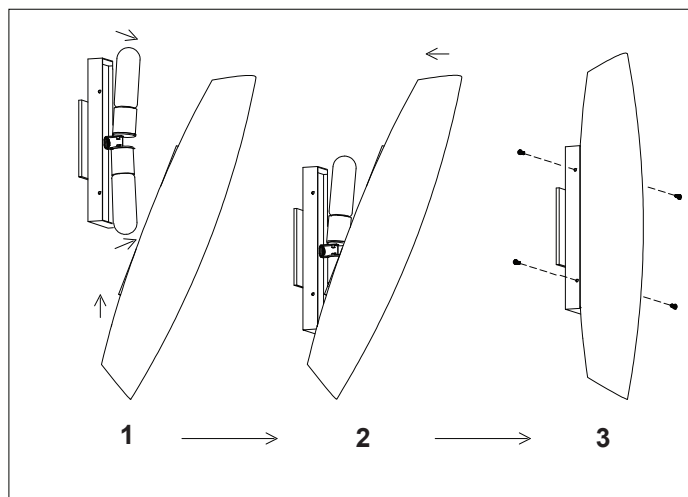
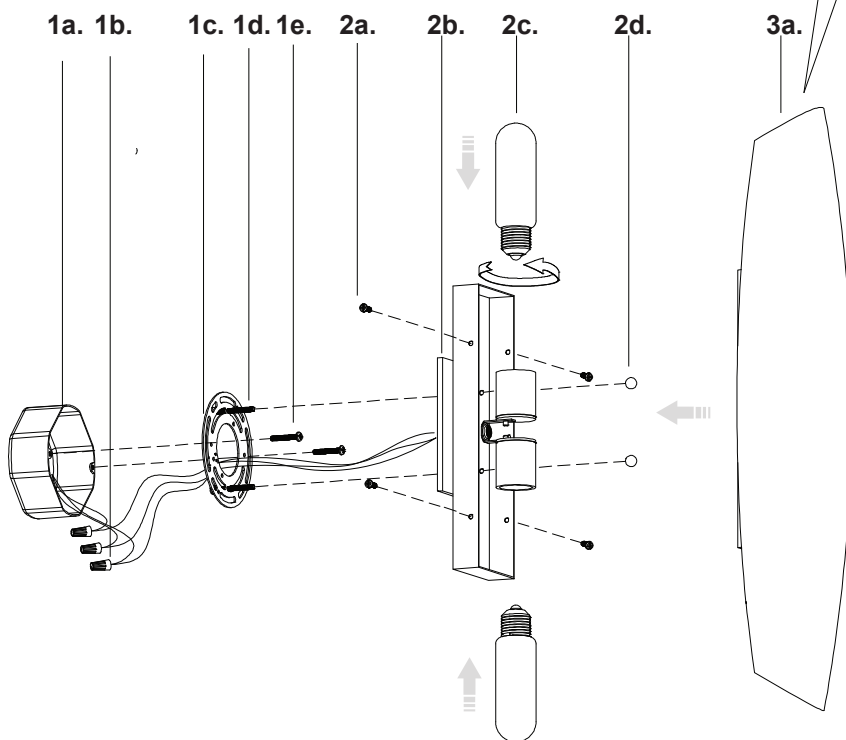


ILLUSTRATION 1-3



KUZCO
LIGHTING

19054 28th Avenue Surrey, BC Canada V3S 6M3
T: 604 538 7162 TF: 1-855 85 KUZCO F: 604 538 7196
W: kuzcolighting.com
20161201